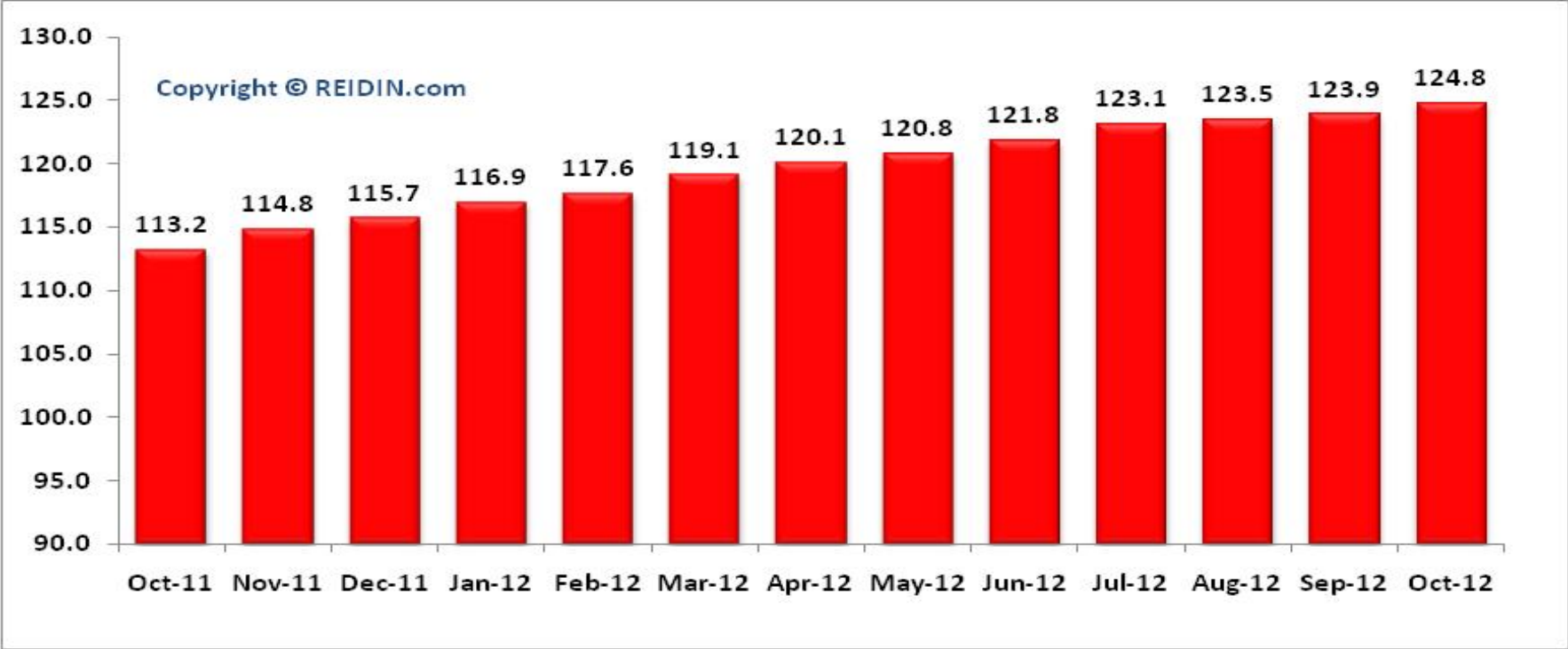


Issue: 23

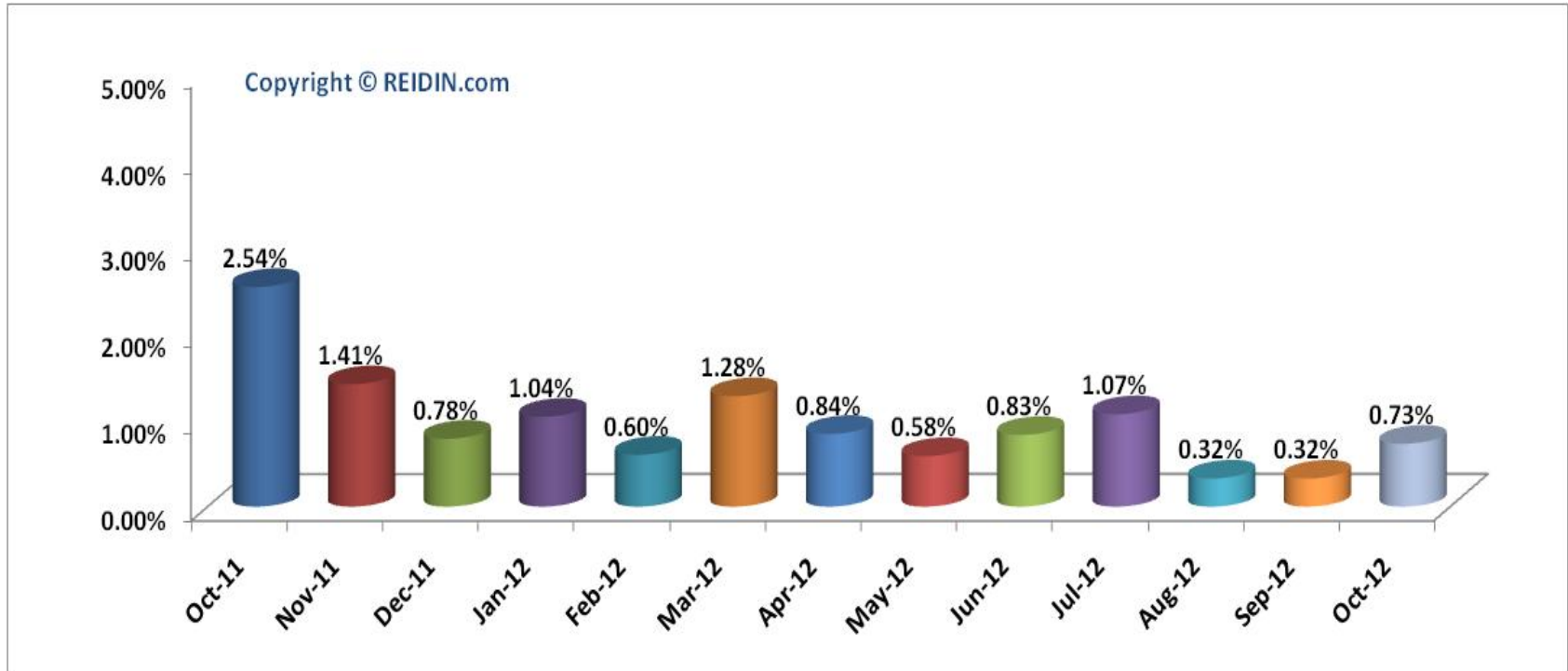
- According to the results of REIDIN.com-GYODER New Home Price Index with the support of Garanti, in October 2012 there is 0.73% increase with respect to the previous month and in compliance with October 2011 there is 10.25% increase.
- According to October 2012 results of REIDIN.com-GYODER New Home Price Index, “Trademarked Projects” in Istanbul European side shows 0.15% increase and 1.69% increase in Asian side.
- According to October 2012 results, REIDIN.com-GYODER New Home Price Index shows the increase of 0.96% in 1+1 flat type; increase of 0.78% in 2+1 flat type; increase of 0.82% in 3+1 flat type and increase of 0.67% in 4+1 flat type with respect to the previous month.
- According to October 2012 results, REIDIN.com-GYODER New Home Price Index reveals that there is 1.05% increase in 51-75sqm size; 0.84% increase in 76-100sqm; 0.72% increase in 101-125sqm size; 0.74% increase in 126-150sqm and 0.58% increase in 151sqm and bigger sized properties with respect to the previous month.

REIDIN.com-GYODER NEW HOME PRICE INDEX (JAN.2010=100)



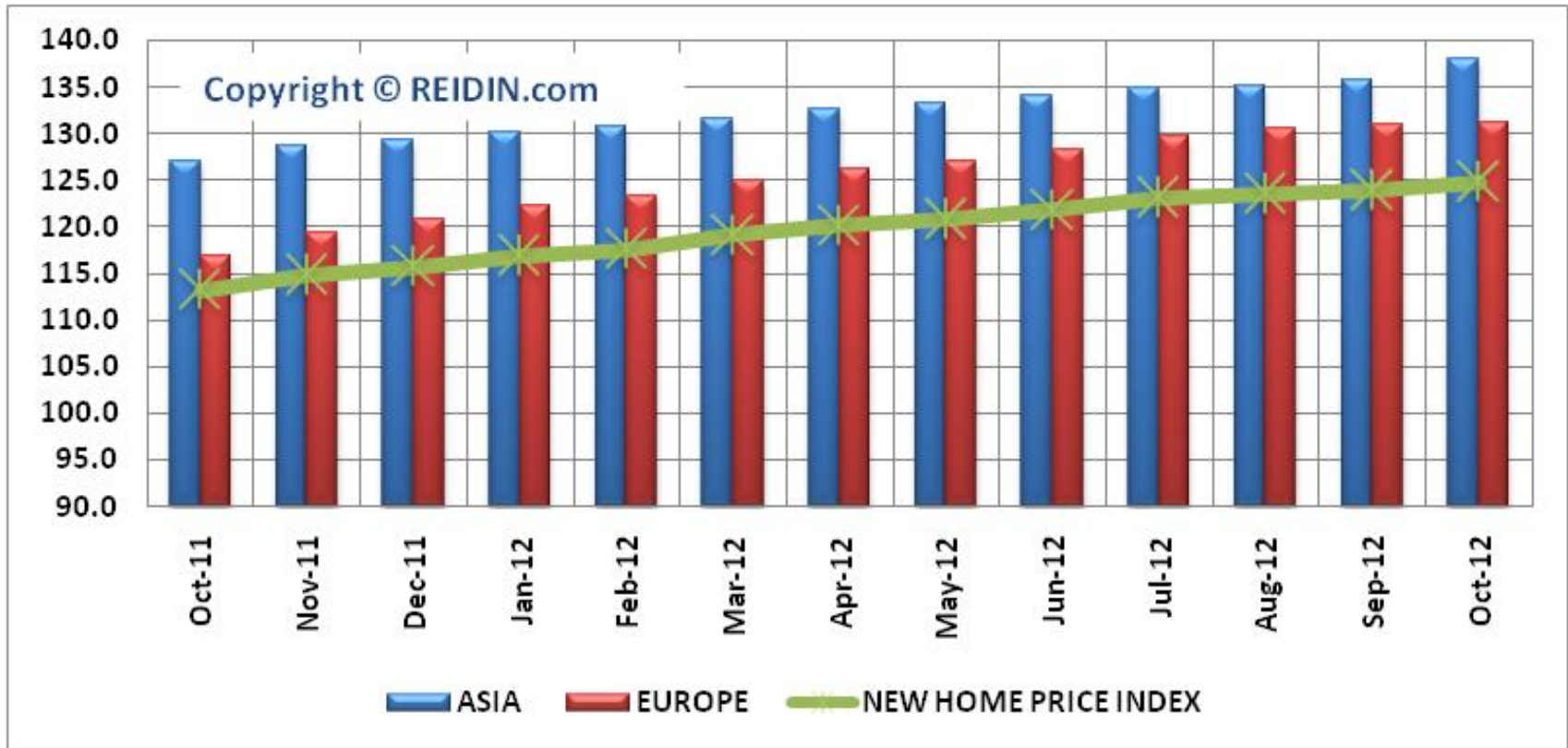
	Index Value: October 2012	% Change in Month	% Change in Past Year	% Change in Base Period
New Home Index	124.8	0.73%	10.25%	24.80%

% CHANGE IN REIDIN.com-GYODER NEW HOME PRICE INDEX



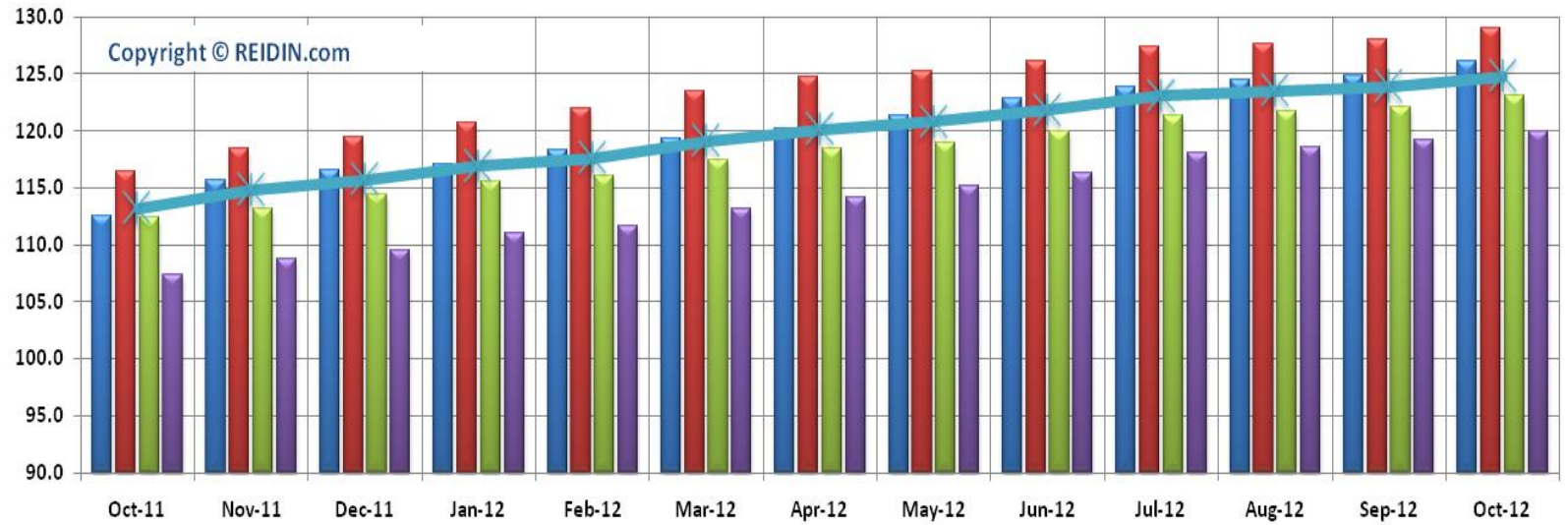
According to the results of REIDIN.com-GYODER New Home Price Index with the support of Garanti, in October 2012 there is 0.73% increase with respect to the previous month and in compliance with October 2011 there is 10.25% increase.

REIDIN.com-GYODER NEW HOME PRICE INDEX: ISTANBUL ASIAN-EUROPEAN SIDE PROJECTS (JAN.2010=100)



According to October 2012 results of REIDIN.com-GYODER New Home Price Index, “Trademarked Projects” in Istanbul European side shows 0.15% increase and 1.69% increase in Asian side.

TYPE OF HOUSES: NUMBER OF ROOMS (JAN.2010=100)



	Oct-11	Nov-11	Dec-11	Jan-12	Feb-12	Mar-12	Apr-12	May-12	Jun-12	Jul-12	Aug-12	Sep-12	Oct-12
1+1	112.5	115.7	116.6	117.1	118.3	119.3	120.2	121.4	122.8	123.9	124.5	124.9	126.1
2+1	116.4	118.4	119.4	120.7	122.0	123.5	124.7	125.3	126.1	127.4	127.6	128.0	129.0
3+1	112.4	113.2	114.4	115.6	116.0	117.5	118.5	119.0	120.0	121.4	121.7	122.1	123.1
4+1	107.4	108.7	109.5	111.0	111.7	113.2	114.2	115.2	116.3	118.1	118.6	119.2	120.0
NHI	113.2	114.8	115.7	116.9	117.6	119.1	120.1	120.8	121.8	123.1	123.5	123.9	124.8

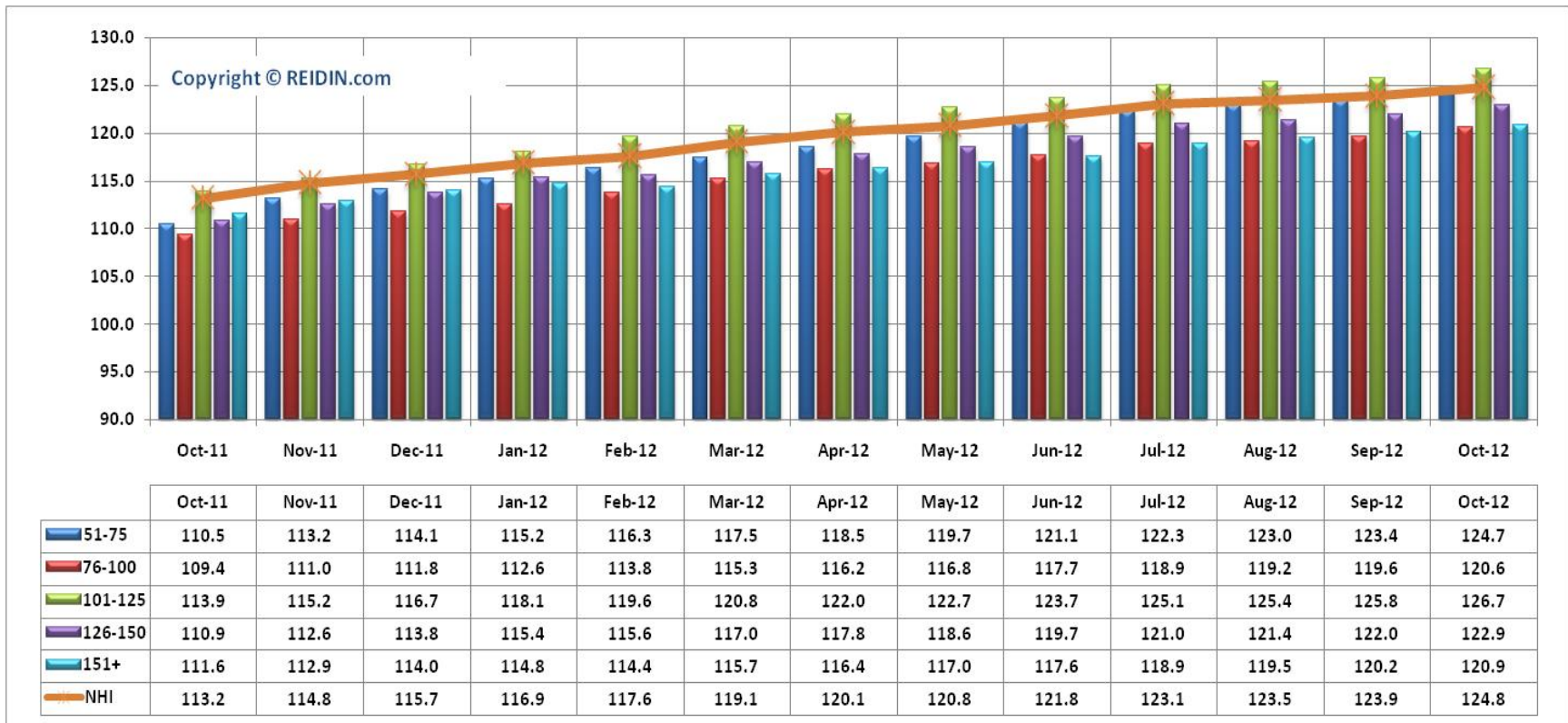
According to October 2012 results, REIDIN.com-GYODER New Home Price Index shows the increase of 0.96% in 1+1 flat type; increase of 0.78% in 2+1 flat type; increase of 0.82% in 3+1 flat type and increase of 0.67% in 4+1 flat type with respect to the previous month.

TYPE OF HOUSES: NUMBER OF ROOMS

Type of Houses	Index Value: October 2012	% Change in Month	% Change in Past Year	% Change in Base Period
1+1	126.1	0.96%	12.09%	26.10%
2+1	129.0	0.78%	10.82%	29.00%
3+1	123.1	0.82%	9.52%	23.10%
4+1	120.0	0.67%	11.73%	20.00%

Base Period: January 2010=100

TYPE OF HOUSES: SIZE RANGE (JAN.2010=100)

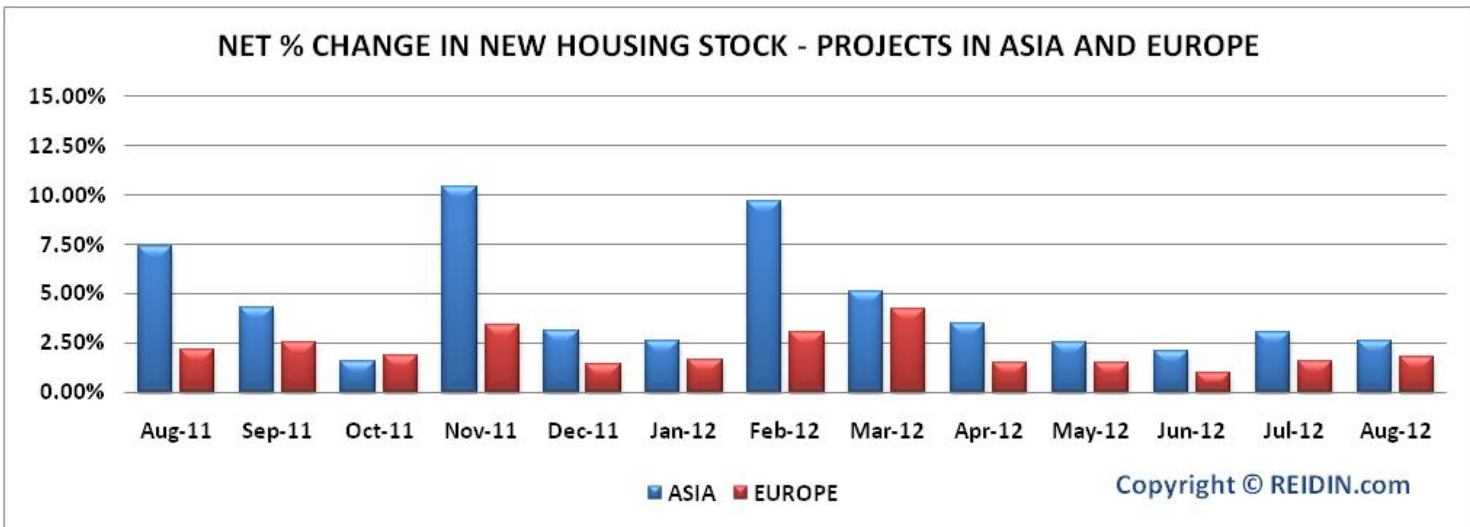
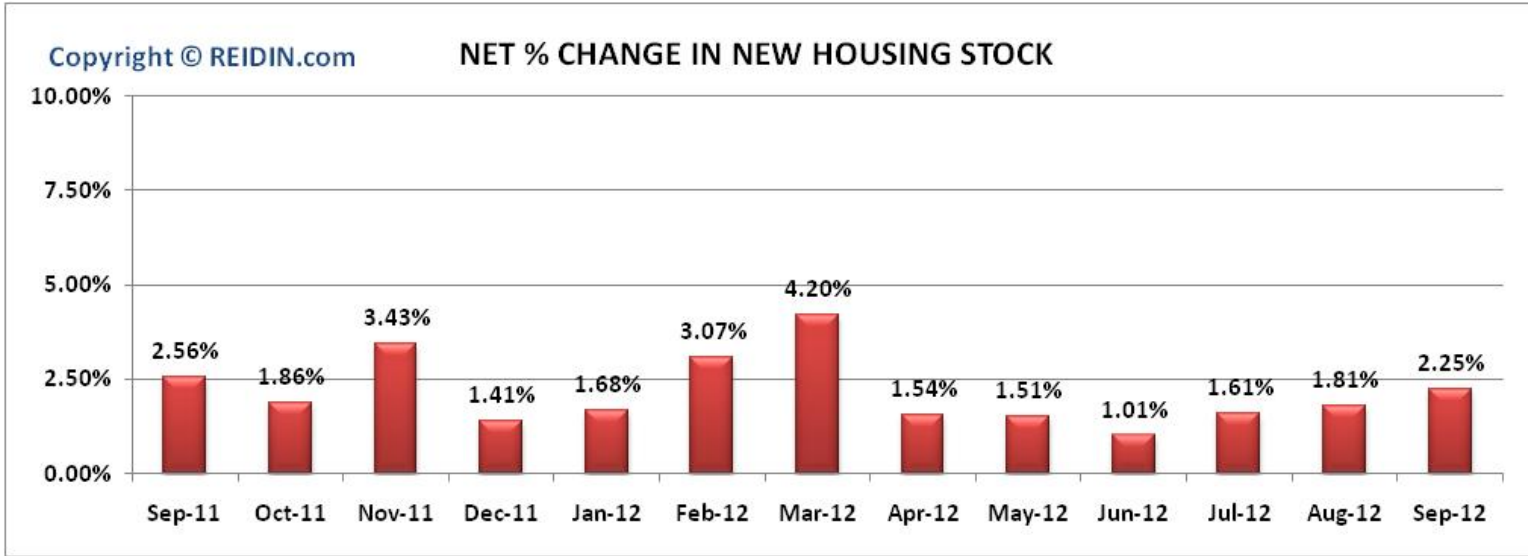


According to October 2012 results, REIDIN.com-GYODER New Home Price Index reveals that there is 1.05% increase in 51-75sqm size; 0.84% increase in 76-100sqm; 0.72% increase in 101-125sqm size; 0.74% increase in 126-150sqm and 0.58% increase in 151sqm and bigger sized properties with respect to the previous month.

TYPE OF HOUSES: SIZE RANGE

Type of Houses	Index Value: October 2012	% Change in Month	% Change in Past Year	% Change in Base Period
51-75 SQM	124.7	1.05%	12.85%	24.70%
76-100 SQM	120.6	0.84%	10.24%	20.60%
101-125 SQM	126.7	0.72%	11.24%	26.70%
126-150 SQM	122.9	0.74%	10.82%	22.90%
151 SQM +	120.9	0.58%	8.33%	20.90%

Base Period: January 2010=100



- **What is?**

It is the indicator index, which is developed from the properties of corporate real estate investment firms generally known as "Trademarked Projects", and recently has been produced in many countries like USA, Australia, Canada.

- **Methodology**

The monthly REIDIN.com-GYODER New Home Price Index uses a “stratified median index” approach for index calculation—an approach that is widely used for indexing housing prices. Taken January 2010 (January 2010=100) as the base period, is calculated with the formula of Laspeyres.

- **Coverage**

REIDIN.com-GYODER New Home Price Index is calculated on 62 projects and with a monthly average number of 22,500 properties presented by 24 developers.

PARTICIPANT DEVELOPERS



DUMANKAYA



TEKFEN EMLAK GELİŞTİRME GRUBU



— Indices

- REIDIN.com - GYODER New Home Price Index
- REIDIN.com - GYODER Office Index
- REIDIN.com - Residential Property Price Index (Sales and Rent)
- REIDIN.com - Housing Affordability Index
- REIDIN.com - Rental Affordability Index
- REIDIN.com - Gross Rental Yield Index

— Modules

- REIDIN.com - Property Valuation Analysis Module
- REIDIN.com - Loan-to-Value Calculation Module
- REIDIN.com - Price-Rent Ratio Calculation Module

REIDIN.com - Istanbul Office

**Avni Dilligil Sokak, C Blok, No: 7/13
34360, Mecidiyeköy,
Istanbul, Turkey**

T: + 90 212 347 53 45

F: + 90 212 347 53 46

www.reidin.com

info@reidin.com